

# Weekly/Yearly Timer

## W48×H48mm, Weekly/Yearly Timer

NEW

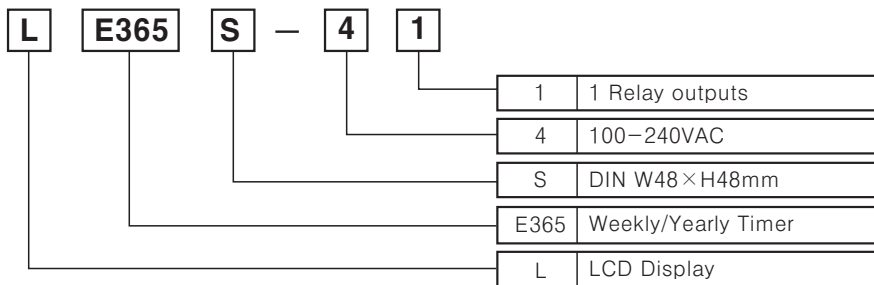
### Features

- Easy to check and change the program setting.
- Customizable weekly or yearly unit time setting and control by user
- Includes Daylight Saving Time function
- 1 Independent control output. (Relay)
- Flush and Surface, DIN Rail mounting are in one unit.

**⚠ Please read "Caution for your safety" in operation manual before using.**



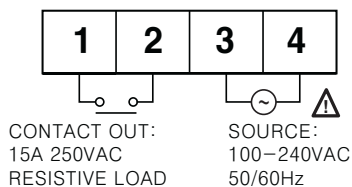
### Ordering information



### Specifications

Model	<b>LE365S-41</b>	
Power supply	100–240VAC 50/60Hz	
Allowable voltage range	90 ~ 110% of rated voltage	
Power consumption	2.4VA	
Timing program	48 steps for weekly, 24 steps for yearly	
Operation mode	ON/OFF mode, Cycle mode, Pulse mode	
Temperature error	±0.01% ±0.05sec	
Mounting	Panel flush, Surface, DIN rail	
Time deviation	±15sec/month(25°C) (±4sec/week)	
Memory protection	Over 5 years(at 25°C)	
Control Output	Contact type	SPST (Single Pole Single Contact)
	Contact capacity	250VAC 15A resistive load
	Output number	Independent 1 output (1a)
Relay life cycle	Mechanical	Min. 5,000,000 operations (Switching capacity 30 times/minute)
	Electrical	50,000 operations<Switching capacity 20 times/1 minute, at 250VAC 15A (resistive load)>
Insulation resistance	Min. 100MΩ (at 500VDC)	
Dielectric strength	2000VAC 50/60Hz for 1minute	
Noise strength	±2kV the square wave noise (pulse width:1μs) by the noise simulator	
Ambient temperature	-10 ~ 55°C (at non-freezing status)	
Storage temperature	-25 ~ 65°C (at non-freezing status)	
Ambient humidity	35 ~ 85%RH	
Unit weight	Approx. 110g	

### Connections

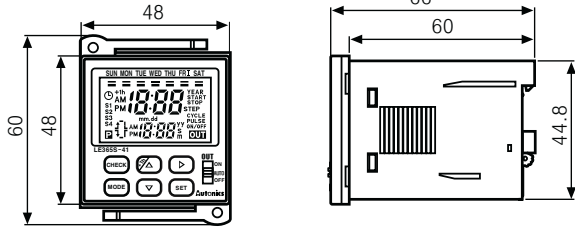


- (A) Counter
- (B) Timer
- (C) Temp. controller
- (D) Power controller
- (E) Panel meter
- (F) Tacho/Speed/Pulse meter
- (G) Display unit
- (H) Sensor controller
- (I) Switching power supply
- (J) Proximity sensor
- (K) Photo electric sensor
- (L) Pressure sensor
- (M) Rotary encoder
- (N) Stepping motor & Driver & Controller
- (O) Graphic panel
- (P) Field network device
- (Q) Production stoppage models & replacement

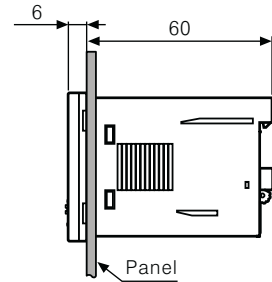
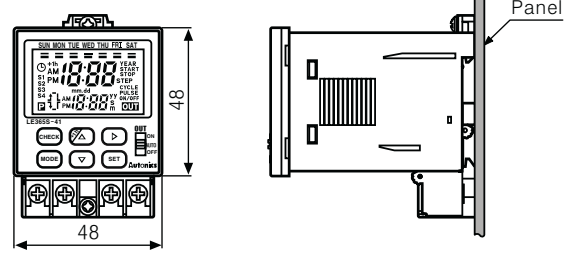
# LE365S-41

## Dimensions & Mounting

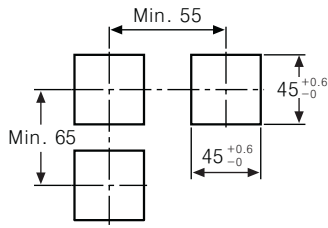
### 1) Front panel mounting



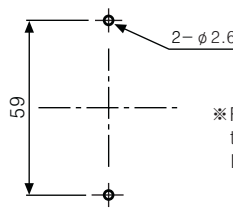
### 2) Surface mounting



● Panel cut-out

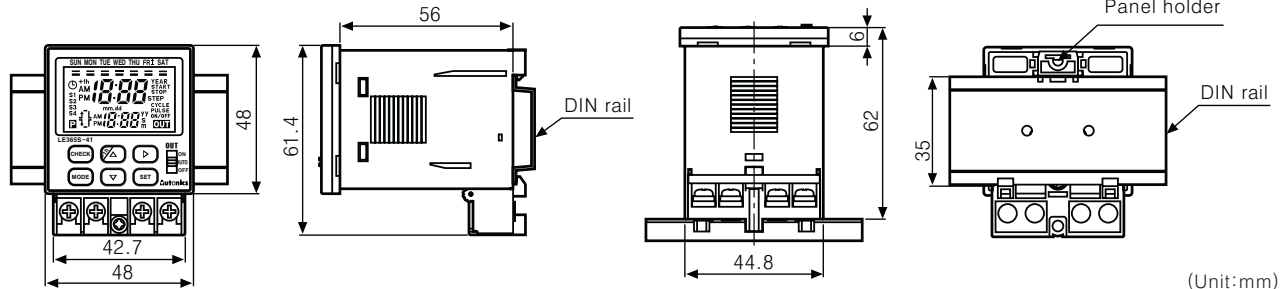


● Panel hole cut-out



※ Fix the Weekly/Yearly timer on the panel with M3 tapping screws.

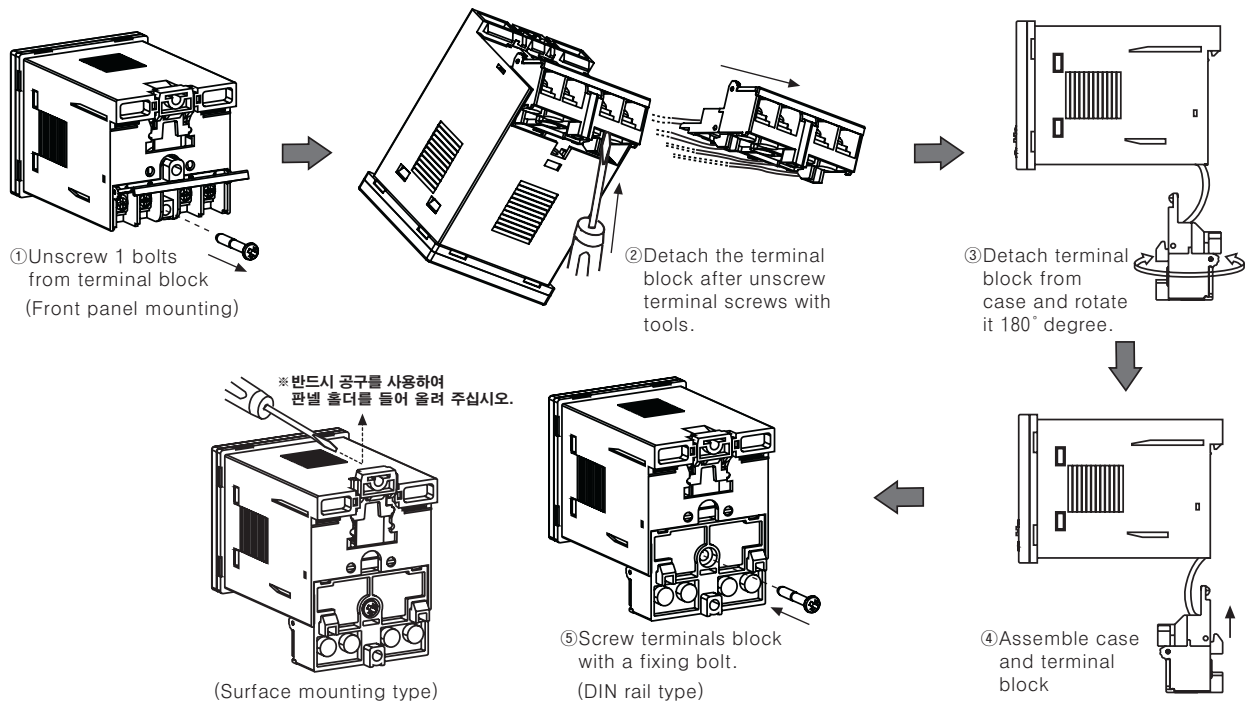
### 3) DIN Rail mounting



(Unit:mm)

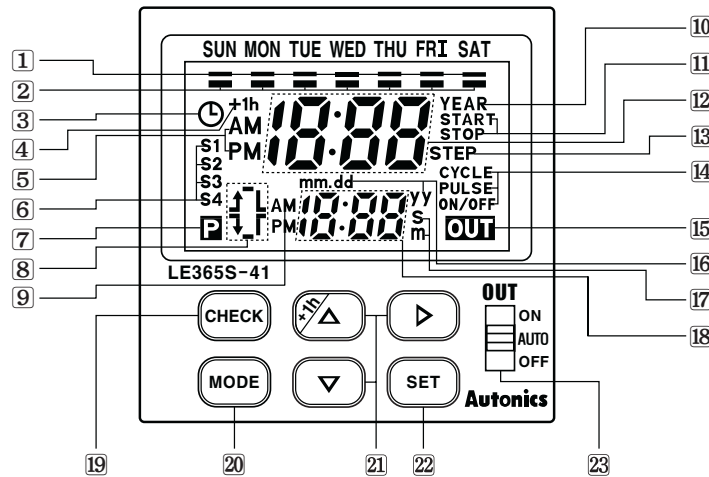
## How to switch from the flush mounting to surface or DIN rail mounting type

Remove terminals from the body after unscrewing terminals screws, and then assemble terminals to the body after rotating terminals as shown below.



# Weekly/Yearly Timer

## Front panel identification



(A)	Counter
(B)	Timer
(C)	Temp. controller
(D)	Power controller
(E)	Panel meter
(F)	Tacho/Speed/Pulse meter
(G)	Display unit
(H)	Sensor controller
(I)	Switching power supply
(J)	Proximity sensor
(K)	Photo electric sensor
(L)	Pressure sensor
(M)	Rotary encoder
(N)	Stepping motor & Driver & Controller
(O)	Graphic panel
(P)	Field network device
(Q)	Production stoppage models & replacement

- 1 Day indicator
- 2 Day display
  - Light : Day is selected.
  - Light-out : Day is not selected.
- 3 Current time setting mode indicator
- 4 DST display(Daylight Saving Time)
- 5 AM/PM display(Main display)
- 6 Season display
- 7 Program display
- 8 Display ON time/day, OFF time/day, ON time width, OFF time width
- 9 AM/PM display(Sub-display)
- 10 YEAR display : It is lighted when set, check, modify, delete yearly program, set yearly holidays and operate yearly program.
- 11 Yearly START/STOP day display
- 12 Main display

- 13 Remaining step display
- 14 Operation mode display
- 15 Output mode display
- 16 Year, month, date display
- 17 Unit of pulse width display
- 18 Sub-display
- 19 CHECK Key
- 20 MODE Key
- 21 Operation key : Press [+1h] key over 3sec in RUN mode, DST mode is set and released.
- 22 SET Key
- 23 Output selection switch
  - AUTO : Control output according to the set program.
  - ON : Output is ON.(Operation)
  - OFF : Output is OFF.

## Functions

### Definitions

- Record : A part of program that controls output operation.
- Step : Basic component of Record.

### Operation modes

If the operation mode of Program1 (Program2) is set on Pulse mode initially, the Pulse mode is fixed for additional programs.

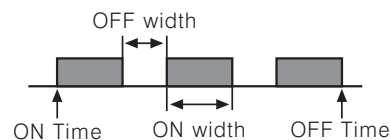
#### Weekly ON/OFF mode

- Output operation by ON/OFF set time.
- Min. time setting unit : 1 min.
- Able to set ON/OFF day separately.
- One Record in two Steps (ON day/ON time, OFF day/OFF time)



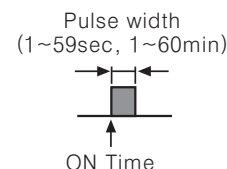
#### Weekly Cycle mode

- Output operation by ON/OFF set time.
- Min. time setting unit : 1 min.~12:59
- Range of ON/OFF time : 1 min.~12:59
- One Record in three Steps (ON day/ON time, OFF day/OFF time, ON width/OFF width)



#### Weekly Pulse mode

- Output turns ON at ON time for a specified pulse width.(Pulse width : 1~59sec, 1~60min)
- One Record in two Steps (ON day/ON time, Pulse width)

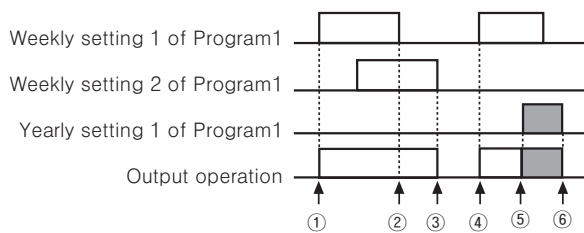


## ■ Functions

### ◎ Programs

- Yearly ON/OFF mode  
Output turns ON at ON time on START date and turns OFF at OFF time on STOP date.
- One Record in three Steps (START/STOP date, ON/OFF time)
- Yearly Pulse mode  
Output turns ON at ON time on START date and turns OFF at OFF time on STOP time for a specified pulse width repeatedly.
- One Record in three Steps (START/STOP date, ON time, Pulse width)

### ◎ Program operation



- ① ~ ② : Operated by weekly setting 1 of Program 1.
- ② ~ ③ : Operated by weekly setting 2 of Program 1.
- ④ ~ ⑤ : Operated by weekly setting 1 of Program 1.
- ⑤ ~ ⑥ : Operated by yearly setting 1 of Program 1.

(During weekly program operation at 12:00 AM on START date, the weekly program operation stops, and it changes to yearly program operation mode. The yearly program operation stops at 12:00 AM on the next day of STOP date.)

### ◎ Display and change of next mode

- The day of next mode in Program is displayed on the day indicator, and the time of next mode is displayed on the lower row of screen.
- In ON/OFF operation mode, set ON time and OFF time to next mode. In Pulse operation mode, set Pulse ON time to next mode.

### ◎ Power restore mode

In setting group 2–Level 2 (Power Restore), select Auto ("RL") or Normal ("nor") by ▲ or ▼ keys, and press **SET** key to set.

- Auto ("RL") power restore mode  
Output operates according to program when power turns on again after power failure.
- Normal ("nor") power restore mode  
When power turns on again after power failure, output is kept OFF and "RET.IN" flashes on the panel. When Power Restore input is detected, "RET.IN" turns off and output operates according to program.

### ◎ Season switching mode

In setting group 2–Level ("SEn" is lighted, "oFF" is flashed.), select ON ("on") by ▲ or ▼ key. Press **SET** key to set.

**\*Note : When the season switching mode changed from "oFF" to "on" or vice versa, previous set programs are deleted.**

- ON ("on") mode  
Weekly program is switched automatically by season switching.
  - Period setting per season
- ① Press **SET** key in period setting per season mode of setting group 2. ("SEn" is flashed, season with preset period is lighted and "START" and "STOP" are lighted.)
- ② Advance to the flashing position of season selection among S1, S2, S3, S4 by ▲ or ▼ keys and press **SET** key.
- ③ After set **START** month, date per season and press **SET** key.
- ④ **SET** key is pressed after set **STOP** month, date per season, it is advanced to LEVEL1 of period setting per season. Add or adjust the period setting by **SET** key.
- It is disable to use when it is OFF ("oFF").

### ◎ Daylight Saving Time

In setting group 2–LEVEL 2 ("dSt" is lighted, "RL" or "nor" is flashed.), select Auto ("RL") or Normal ("nor") by ▲ or ▼ keys. press **SET** key to set.

- Auto ("RL") Daylight Saving Time mode  
Current time will be faster as an hour when it is started and slower as an hour when it is finished.
  - Automatic Daylight Saving Time period setting
- ① Automatic Daylight Saving Time period setting LEVEL 1 of setting group 2. ("dSt" is flashed and "START" and "STOP" are lighted.)
- ② Set START date (Month, date) of automatic Daylight Saving Time mode and press **SET** key.
- ③ Set START time (AM/PM, Hour) of automatic Daylight Saving Time mode and press **SET** key. But, the minute will be fixed as 00.
- ④ Set STOP date (Month, date) of automatic Daylight Saving Time mode and press **SET** key.
- ⑤ Set STOP time (AM/PM, Hour) of automatic Daylight Saving Time mode and press **SET** key. But, the minute will be fixed as 00.
- Normal ("nor") Daylight Saving Time mode  
Press **+1h** key over 3sec in RUN mode, "+1h" is lighted and current time is faster as an hour and "+1h" is lighted out or vice versa, when press **+1h** key over 3sec again.

## ■ Functions

### ○ Current time setting

(Ex) Set the current time as 10, Mar, 2008, 5:10 PM.

#### ① Advance to the current time setting mode

SUN MON TUE WED THU FRI SAT



**MODE** + **SET** keys are pressed over 3sec in RUN mode, it is advanced to current time setting of setting group 2 and clock will be flashed and t.AJ will be lighted in second display part, press **SET** key.

#### ② Year, Month, Date setting

SUN MON TUE WED THU FRI SAT



Press **▲** or **▼** keys to set 08 (year 2008) and move the flashing digit to position month by **▶** key. Press **SET** key after press **▲** or **▼** keys to set date 10.

#### ③ Current time (AM, PM) setting

SUN MON TUE WED THU FRI SAT



Press **▲** or **▼** keys to select PM and move the flashing digit to position hour by **▶** key.

#### ④ Current time (Hour, Min.) setting

SUN MON TUE WED THU FRI SAT



Press **▲** or **▼** keys to set 5 PM and move the flashing digit to position min. by **▶** key. Press **▲** or **▼** key to set 10min and press **SET** key and it is returned to RUN mode when press **MODE** key over 3sec.

- It advances to "① Current time setting mode" in ON status and set current time as shown above ②~④ by **SET** key.
- Current time is set up to 31, Dec, 2099.
- Check current year/month/date in RUN mode  
When **▶** key is pressed over 3sec in RUN mode, it advances to current year/month/date display. After display current year/month/date for 3sec, it returns to RUN mode displaying current display.

(A)  
Counter

(B)  
Timer

(C)  
Temp.  
controller

(D)  
Power  
controller

(E)  
Panel  
meter

(F)  
Tacho/  
Speed/  
Pulse  
meter

(G)  
Display  
unit

(H)  
Sensor  
controller

(I)  
Switching  
power  
supply

(J)  
Proximity  
sensor

(K)  
Photo  
electric  
sensor

(L)  
Pressure  
sensor

(M)  
Rotary  
encoder

(N)  
Stepping  
motor &  
Driver &  
Controller

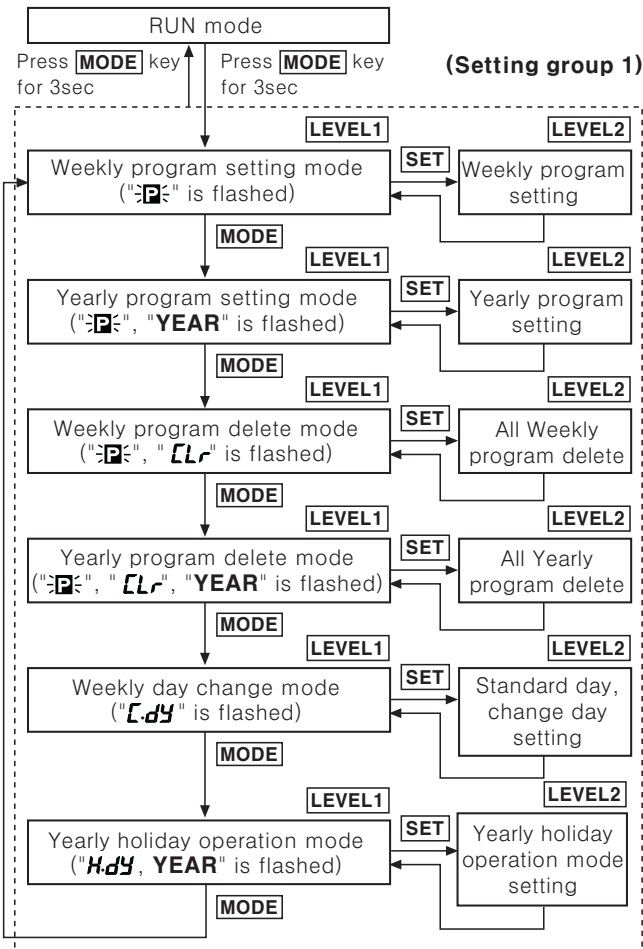
(O)  
Graphic  
panel

(P)  
Field  
network  
device

(Q)  
Production  
stoppage  
models &  
replacement

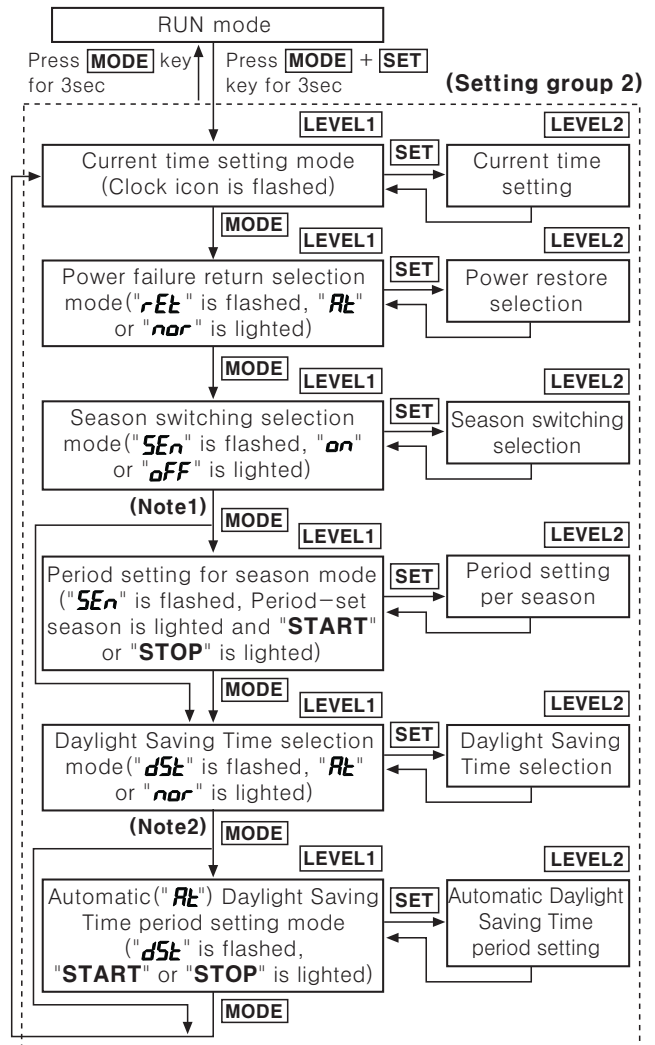
## ■ Program setting

### ◎ Setting group 1



- When it is advanced to setting group 1 in RUN mode, output (OUT1, OUT2) will be OFF.
- It is returned to previous setting group 1 when power of time switch is ON again in setting group 1.
- When **MODE** key is pressed in LEVEL2 of setting group 1, current setting will be canceled and it is returned to previous LEVEL1.
- When press **SET** key to program over max. number of steps for weekly program in Weekly program setting mode of setting group 1-LEVEL 1, number of remaining steps and "STEP" are flashed and it returns to LEVEL 1 status.
- When press **SET** key to program over max. number of steps for yearly program in Yearly program setting mode of setting group 1-LEVEL 1, number of remaining steps and "STEP" are flashed it returns to LEVEL 1 status.

### ◎ Setting group 2



- **(Note1)** Season switching selection is "oFF".
- **(Note2)** Automatic switching selection of Daylight Saving Time is Normal("nor").
- When it advances to setting group 2 in RUN mode, output(OUT1, OUT2) will be OFF.
- When power of time switch is ON again in setting group 2, it is returned to previous setting group 1.
- Front **MODE** key is pressed in LEVEL2 of setting group 2, it is returned to previous LEVEL1.
- When season switching selection is changed from "oFF" to "on" or "on" to "oFF", previous set weekly program will be deleted.

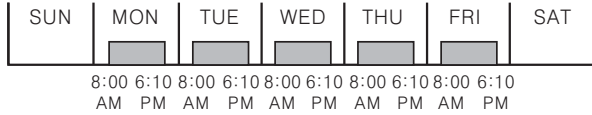
# Weekly/Yearly Timer

## Program setting

### Weekly program setting

#### Weekly ON/OFF mode

(Ex) Output1 (OUT1) is ON from Monday to Friday at 8:00 AM and OFF at 6:10 PM.



#### ① Advance to weekly program setting mode

SUN MON TUE WED THU FRI SAT



**MODE** key is pressed over 3sec in RUN mode, "P" is flashed and press **SET** key.

#### ② Mode type setting

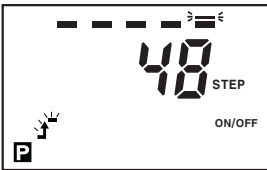
SUN MON TUE WED THU FRI SAT



Press **SET** key in ON/OFF mode.

#### ③ ON day setting

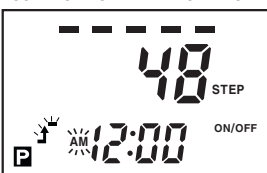
SUN MON TUE WED THU FRI SAT



Press **▶** key to move the indicator to Monday, it will be lighted when **▲** or **▼** keys are pressed and move it to Tuesday by **▶** key. Press **SET** key after Tuesday, Wednesday, Thursday, Friday are lighted.

#### ④ ON time setting (AM, PM)

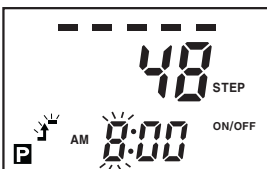
SUN MON TUE WED THU FRI SAT



**▶** key is pressed, move the flashing to hour position and select PM by **▲** or **▼** keys when ON time is afternoon.

#### ⑤ ON time setting (Hour, Minute)

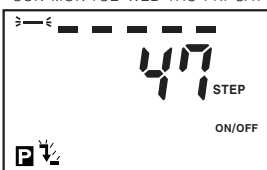
SUN MON TUE WED THU FRI SAT



Set 8:00 by **▼** key and press **SET** key.

#### ⑥ OFF day setting

SUN MON TUE WED THU FRI SAT



Press **SET** key to check ON/OFF day.

#### ⑦ OFF time setting (AM, PM)

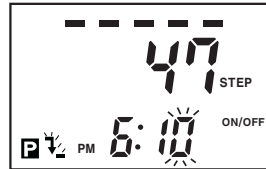
SUN MON TUE WED THU FRI SAT



Select PM by **▲** or **▼** keys and move the flashing to hour position by **▶** key.

#### ⑧ OFF time setting (Hour, Minute)

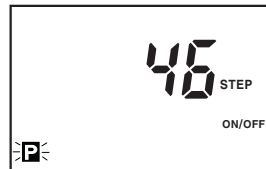
SUN MON TUE WED THU FRI SAT



Move the flashing to minute position after set 6:00 by **▲** key and set the minute as 10 and press **SET** key.

#### ⑨ Complete to set

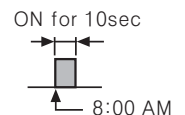
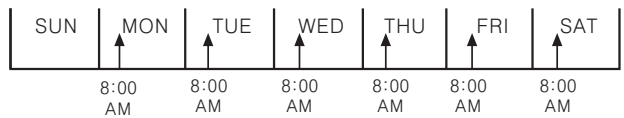
SUN MON TUE WED THU FRI SAT



Press **SET** key to set additional program.

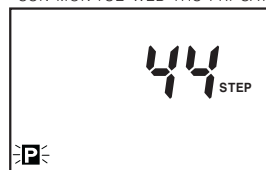
### Weekly Pulse mode

Output2 (OUT2) is ON for 10sec at 8:00AM from Monday to Friday during S2 season in case, period of S1, S2, S3, S4 is set.



#### ① Advance to weekly program setting mode

SUN MON TUE WED THU FRI SAT



**MODE** key is pressed for 3sec in RUN mode, "P" is flashed and press **SET** key.

#### ② Mode type setting

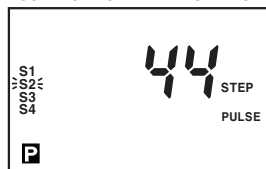
SUN MON TUE WED THU FRI SAT



Press **▲** key when ON/OFF is flashed, PULSE is flashed and press **SET** key.

#### ③ Season selection

SUN MON TUE WED THU FRI SAT



Press **▼** key to select season S2 and press **SET** key.

(A) Counter

(B) Timer

(C) Temp. controller

(D) Power controller

(E) Panel meter

(F) Tacho/Speed/Pulse meter

(G) Display unit

(H) Sensor controller

(I) Switching power supply

(J) Proximity sensor

(K) Photo electric sensor

(L) Pressure sensor

(M) Rotary encoder

(N) Stepping motor & Driver & Controller

(O) Graphic panel

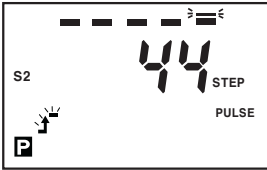
(P) Field network device

(Q) Production stoppage models & replacement

## Program setting

### ④ ON day setting

SUN MON TUE WED THU FRI SAT



Press **▶** key to move the indicator to Monday, it will be lit when **▲** or **▼** keys are pressed and move it to Tuesday by **▶** key. Press **SET** key after light Tuesday, Wednesday, Thursday and Friday.

### ⑤ ON time setting (AM, PM)

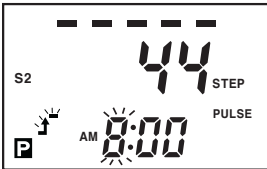
SUN MON TUE WED THU FRI SAT



Press **▶** key, move the flashing to hour position and select PM by **▲** or **▼** keys when ON time is afternoon.

### ⑥ ON time setting (Hour, Minute)

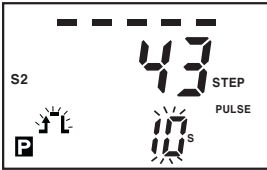
SUN MON TUE WED THU FRI SAT



Set 8:00 by **▼** key and press **SET** key.

### ⑦ Pulse width setting

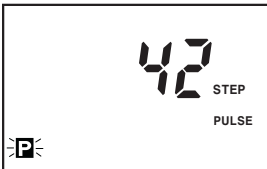
SUN MON TUE WED THU FRI SAT



Press **▲** key to select pulse width as 10s(10sec.) and press **SET** key.

### ⑧ Complete to set

SUN MON TUE WED THU FRI SAT



Press **SET** key to set additional program.

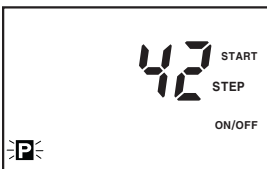
### ● Weekly Cycle mode

(Ex) Output1 (OUT1) is ON for 10min and OFF for 5min from Monday 6:00AM to Saturday 5:30PM.



### ① Advance to weekly program setting mode

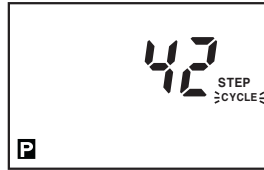
SUN MON TUE WED THU FRI SAT



Press **MODE** key for 3sec in RUN mode, "P" is flashed.

### ② Mode type setting

SUN MON TUE WED THU FRI SAT



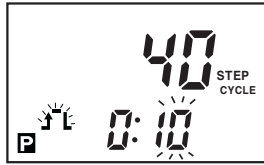
Press **▲** key when ON/OFF is flashed, CYCLE is flashed and press **SET** key.

### ③ ~ ⑧

Refer to ③~⑧ of "● Weekly ON/OFF mode" to set ON day, ON time, OFF day and OFF time.

### ⑨ ON time width setting

SUN MON TUE WED THU FRI SAT



Press **▶** key to move the flashing to minute position and set as 10min by **▲** key and press **SET** key.

### ⑩ OFF time width setting

SUN MON TUE WED THU FRI SAT



Press **▶** key to move the flashing to minute position and set as 5min by **▲** key and press **SET** key.

### ⑪ Complete to set

SUN MON TUE WED THU FRI SAT



Press **SET** key to set additional program.

### ◎ Weekly day change

When the specified day mode is required to install in other day, it is started from the set day and returned to previous program setting automatically when it is finished.

### ● Weekly day change cancellation

- ① Change current year, month, date in current time setting mode
- ② Change standard day
- ③ Delete all program in program
- ④ Season switching

### ● Setting example

Output is ON in Saturday at 9:00AM and OFF at 12:00PM and it is ON 8:30AM and OFF at 6:00PM from Monday to Friday and the mode of Monday and Tuesday is operated temporarily as Saturday (standard) program.



# Weekly/Yearly Timer

## ■ Program setting

### ① Advance to weekly day change mode

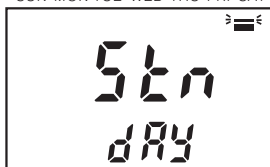
SUN MON TUE WED THU FRI SAT



Press **MODE** key over 3sec to move to the setting group1 in RUN mode and press it repeatedly until "L.dY" is flashed in second display part and press **SET** key.

### ② Standard day selection

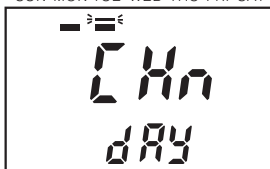
SUN MON TUE WED THU FRI SAT



Press **▶** key to move the indicator to Saturday and press **SET** key. after select Saturday as standard day(Sat is lighted) by **▲** or **▼** keys.

### ③ Change day selection

SUN MON TUE WED THU FRI SAT



Press **▶** key to move the indicator to Monday and select Monday to change(Mon is lighted) by **▲** or **▼** keys and repeat the procedure to select Tuesday to change (Tue is lighted) and press **SET** key to complete.

## ◎ Yearly holiday mode

It operates to off the output without program adjustment during previously set yearly holiday period available from present year to 31, Dec of the next year.

Designate the start date of yearly holiday and year of end date as every year ("--") to repeat the holiday mode for specified in every year.

### ● Setting example

Set every year 5, May to off the output .

### ① Advance to yearly holiday mode

SUN MON TUE WED THU FRI SAT



Press **MODE** key over 3sec to move to the setting group1 in RUN mode and press it repeatedly until "H.dY" is flashed in second display part and press **SET** key.

### ② Yearly holiday No. display

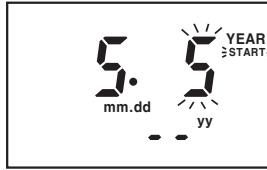
SUN MON TUE WED THU FRI SAT



Press **SET** key after check yearly holiday No.

### ③ Start date of yearly holiday setting

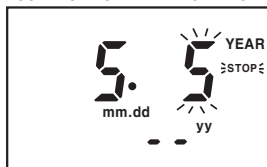
SUN MON TUE WED THU FRI SAT



Press **▶** key until month position is flashed and set May by **▲** key and press **▶** key until date position is flashed. Press **SET** key after set 5th by **▲** key.

### ④ End date of yearly holiday setting

SUN MON TUE WED THU FRI SAT



The flashing is moved to month position directly and press **▲** key to set May and press **▶** key until date position is flashed. Press **SET** key after set 5th by **▲** key.

### ⑤ Complete to yearly holiday

SUN MON TUE WED THU FRI SAT



Press **MODE** key to finish the additional yearly holiday setting and press **SET** key to set .

※It is able to set yearly holiday up to 12 times.

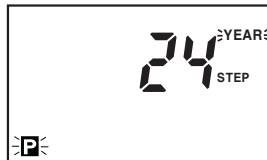
## ◎ Yearly program setting

### ● Yearly ON/OFF mode

(Ex)Output(OUT) is ON from every 5, Apr to 7, Apr at 9:00AM and OFF 5:10PM.

### ① Advance to Program1(P1) yearly program setting mode

SUN MON TUE WED THU FRI SAT



Press **MODE** key for 3 sec in RUN mode, "P" is flashed and press **MODE** key once, then, "P" and YEAR are flashed and press **SET** key to set.

### ② Mode type setting

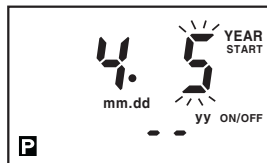
SUN MON TUE WED THU FRI SAT



Press **SET** key when ON/OFF is flashed.

### ③ Start date setting

SUN MON TUE WED THU FRI SAT



Press **▶** key until month position is flashed and set Apr by **▲** key and press **▶** key until date position is flashed. Press **SET** key after set 5th by **▲** key.

(A) Counter

(B) Timer

(C) Temp. controller

(D) Power controller

(E) Panel meter

(F) Tacho/ Speed/ Pulse meter

(G) Display unit

(H) Sensor controller

(I) Switching power supply

(J) Proximity sensor

(K) Photo electric sensor

(L) Pressure sensor

(M) Rotary encoder

(N) Stepping motor & Driver & Controller

(O) Graphic panel

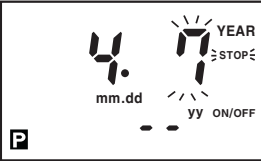
(P) Field network device

(Q) Production stoppage models & replacement

## Program setting

### ④ End date setting

SUN MON TUE WED THU FRI SAT



The flashing is moved to month position directly and press **▲** key to set Apr and press **▶** key until date position is flashed. Press **SET** key after set 7th by **▲** key.

### ⑤ ON time setting(AM, PM)

SUN MON TUE WED THU FRI SAT



**▶** key is pressed, move the flashing to hour position and select PM by **▲** or **▼** keys when ON time is afternoon.

### ⑥ ON time setting(Hour, Minute)

SUN MON TUE WED THU FRI SAT



Press **▼** key to set 9 and press **SET** key after check 00min.

### ⑦ OFF time setting(AM, PM)

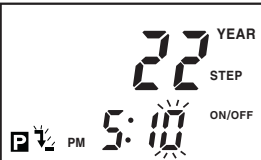
SUN MON TUE WED THU FRI SAT



Select PM by **▲** or **▼** keys and move the flashing to hour position by **▶** key.

### ⑧ OFF time setting(Hour, Minute)

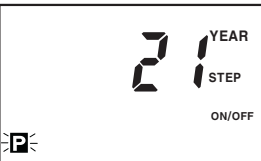
SUN MON TUE WED THU FRI SAT



Move the flashing to minute position after set 5 by **▲** key and set the minute as 10 and press **SET** key.

### ⑨ Complete to set

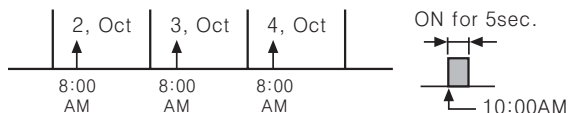
SUN MON TUE WED THU FRI SAT



Press **SET** key to set additional program.

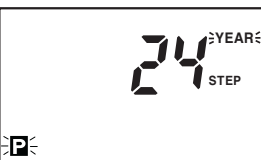
### ● Yearly Pulse mode

(Ex) Output (OUT) is ON from 2, Oct, 2008 to 4, Oct, 2008 at 10:00AM and OFF after 5sec. (Present is 2007.)



### ① Advance to yearly program setting mode

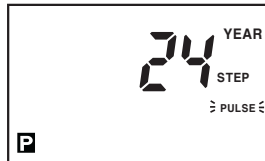
SUN MON TUE WED THU FRI SAT



**MODE** key is pressed for 3sec in RUN mode, "PROG P1" is flashed and press **MODE** key again, "PROG P2 YEAR" is flashed and press **SET** key.

### ② Mode type setting

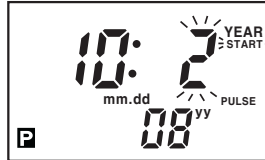
SUN MON TUE WED THU FRI SAT



**▲** key is pressed when ON/OFF is flashed to set PULSE mode and press **SET** key.

### ③ Start date setting

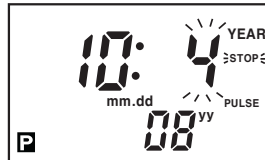
SUN MON TUE WED THU FRI SAT



Press **▲** key twice to set 08 (year 2008) and move to month position by **▶** key. Set Oct by **▼** key and move to date position by **▶** key and press **SET** key after set 2nd by **▲** key.

### ④ End date setting

SUN MON TUE WED THU FRI SAT



The flashing is moved to month position directly by **▶** key and set 4th by **▲** key after move it to date position by **▶** key, then press **SET** key.

### ⑤ ON time setting(AM, PM)

SUN MON TUE WED THU FRI SAT



**▶** key is pressed, move the flashing to hour position and select PM by **▲** or **▼** keys when ON time is afternoon.

### ⑥ ON time setting(Hour, Minute)

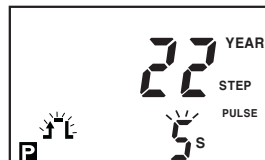
SUN MON TUE WED THU FRI SAT



Press **▼** key twice to set 10 and press **SET** key after check 00min.

### ⑦ Pulse width setting

SUN MON TUE WED THU FRI SAT



Press **▲** key 4 times to select pulse width as 5s and press **SET** key.

### ⑧ Complete to set

SUN MON TUE WED THU FRI SAT



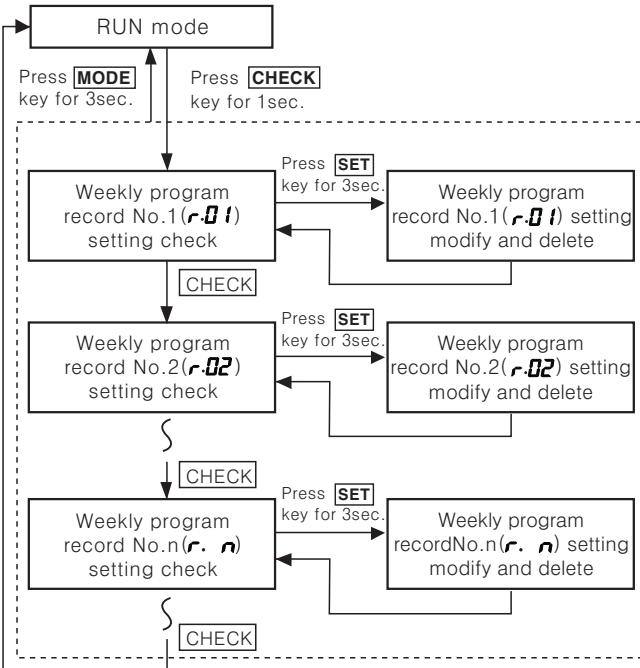
Press **SET** key to set additional program.

※ It is able to set year of start/end date in yearly program setting up to 2 years later from the present year.

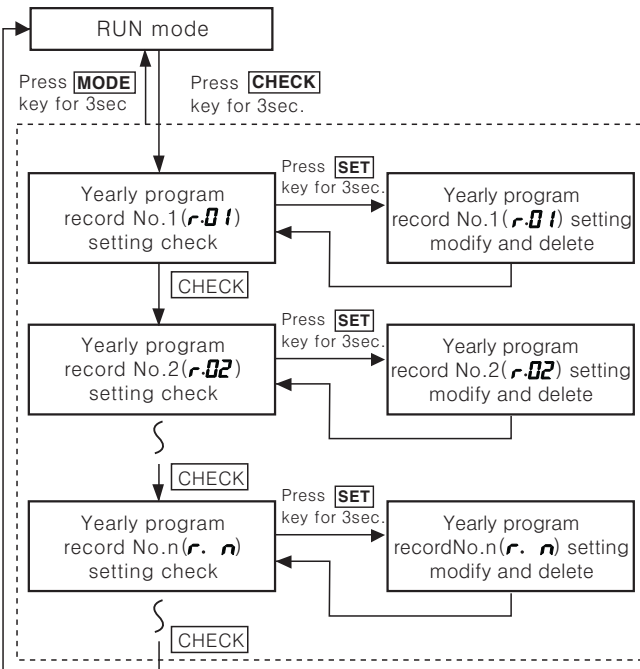
# Weekly/Yearly Timer

## ■ Program check, modify and delete

### ◎ Weekly program check, modify and delete



### ◎ Yearly program check, modify and delete



※ "YEAR" is lighted when check, modify or delete yearly program.

- If any key is untouched for 60sec, it is returned to RUN mode in weekly or yearly program check.
- In weekly or yearly program check, it controls output according to program setting and output is OFF in modify or delete mode.
- When **MODE** key is pressed in weekly or yearly program record modify, delete stand by or delete mode, current work is cancelled and it is returned to check mode.
- Weekly or yearly program record modify and delete

### (1) Program record modify

- ① When press **SET** key over 3sec in program check, "Edt" is flashed in second display part, press **SET** key.
- ② It returns to check mode when finish the modify same as the above procedure.

### (2) Program record delete

- ① When press **SET** key over 3sec in program check, "Edt" is flashed in second display part, press **▲** or **▼** keys until "LLr" is flashed in second display part and press **SET** key.
- ② Press **SET** key over 3sec when "LLr" is lighted in second display part, it returns to program check.

(A) Counter

(B) Timer

(C) Temp. controller

(D) Power controller

(E) Panel meter

(F) Tacho/Speed/Pulse meter

(G) Display unit

(H) Sensor controller

(I) Switching power supply

(J) Proximity sensor

(K) Photo electric sensor

(L) Pressure sensor

(M) Rotary encoder

(N) Stepping motor & Driver & Controller

(O) Graphic panel

(P) Field network device

(Q) Production stoppage models & replacement