

MS86 Ø86mm LED Steady & Flashing / Xenon Strobe Lights

SIGNAL LIGHTS



- Ultra bright LED or Xenon lights
- Wide light distribution with prism-cut dome-shaped lens
- Outstanding visibility at distance
- Selectable Steady or Flashing Modes for LED lights
- PCB module style Xenon lamp
- Fast and easy replacement of lamp
- Red, Yellow, Green, Blue and lens available
- IP65 rated



Order Information

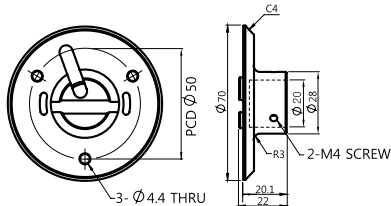
MS86	L-F	02	-	R
Lens Colors				
R	Red			
Y	Yellow			
G	Green			
B	Blue			
C	Clear			
Power Supply				
02	AC/DC 12~24V (AC/DC 24V for LED Style)			
10	AC 110V			
Light Style				
L-F	LED Steady & Flashing			
L-B	LED Steady & Flashing with Buzzer			
S-SD	Xenon Strobe			

Optional Orders

Pole Mount Adaptor



MAM-DS31



Pole Mounting Example

Wall Mount Brackets



MAM-DS30-BLK (Black)
MAM-DS30-BGE (Beige)



MAM-DS26

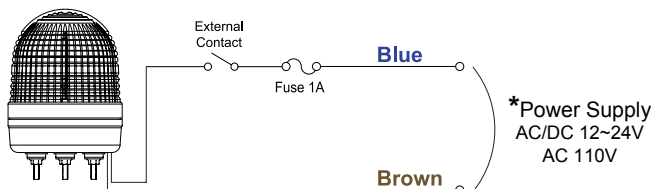
Replacement Parts

Xenon PCB Module	MS86S-LAMP-02	AC/DC 12~24V
	MS86S-LAMP-10	AC 110V
Lens	LENS-MS86-(□)	Dome Lens

(□): indicates color of Lens; R, Y, G, B or C

NOTE: See Page 13 & 14 for Mounting Options and Dimensions.

Wiring Diagram

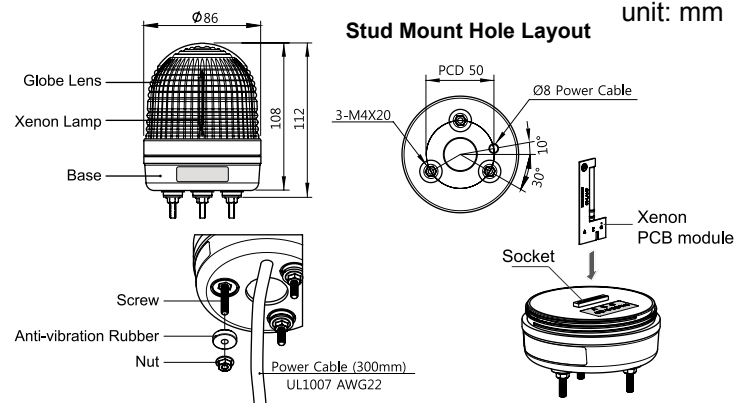


* No polarity for DC applications.

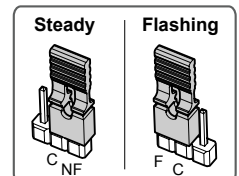
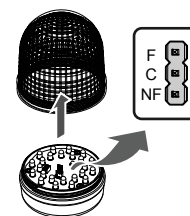
Specifications

Model	MS86L		MS86S	
Style	LED Steady/Flashing		Xenon Strobe	
Power Supply	AC/DC 24V	AC 110V	AC/DC 12-24V	AC 110V
Current Consumption	Red 120mA Yellow 120mA Green 140mA Blue 140mA Clear 140mA		200mA max. dash current: 600mA	220mA 6W
Flash (Strobe Pulse) Rate	80 time/minute ± 3%		60 times/minute ± 3%	
Sound Level	max. 85dB at 1m		—	
Dielectric Strength	500VAC for 1 min.			
Vibration	15~55 Hz; xyz/60min (70m/s ² , 7G)			
Insulation Resistance	1MΩ (at 500VDC mega)			
Ambient Temperature	-30~40°C		-20~70°C	
Storage Temperature	-25~85°C			
Ambient Humidity	45~85% RH			
Degree of Protection	IP65 (IP52 with Buzzer)		IP65	
Recommended Wire Size	PUR Ø5/PVC Ø5 2P/0.3SQ			
Weight	0.3kg ± 5%			

Dimensions

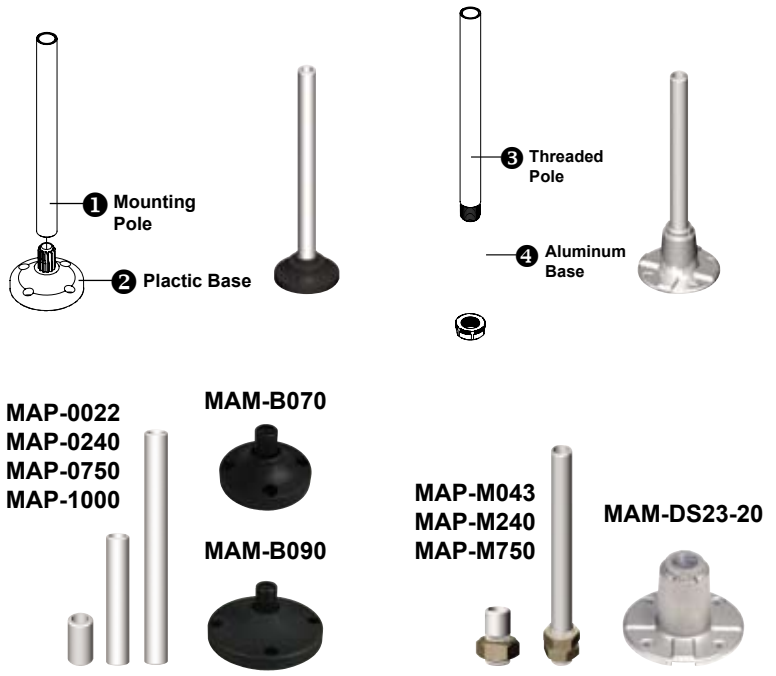


LED Light Steady/Flashing Selection



Pole Mounting with Base

Part	Part #	Description
1	MAP-0022	Ø20mm, 0.87 in (22 mm) pole
	MAP-0240	Ø20mm, 9.45 in (240 mm) pole
	MAP-0750	Ø20mm, 29.53 in (750 mm) pole
	MAP-1000	Ø20mm, 39.37 in (1000 mm) pole
2	MAM-B070	Ø70mm Plastic Base
	MAM-B090	Ø90mm Plastic Base
3	MAP-M043	Ø20mm, 1.69 in (43 mm) threaded pole with 1 nut
	MAP-M240	Ø20mm, 9.45 in (240 mm) threaded pole with 2 nuts
	MAP-M750	Ø20mm, 29.53 in (750 mm) threaded pole with 1 nut
4	MAM-DS23-20	Aluminum Base



L-angle Mounting with Bracket

Part	Part #	Description
3	MAP-M043	Ø20mm, 1.69 in (43 mm) threaded pole with 1 nut
	MAP-M240	Ø20mm, 9.45 in (240 mm) threaded pole with 2 nuts
	MAP-M750	Ø20mm, 29.53 in (750 mm) threaded pole with 1 nut
5	MAM-DS25	L-angle Bracket



Wall Mounting with Bracket

Part	Part #	Description
1	MAP-0022	Ø20mm, 0.87 in (22 mm) pole
	MAP-0240	Ø20mm, 9.45 in (240 mm) pole
	MAP-0750	Ø20mm, 29.53 in (750 mm) pole
	MAP-1000	Ø20mm, 39.37 in (1000 mm) pole
2	MAM-B070	Plastic Base
6	MAM-DS30-BLK	Plastic Wall Mounting Bracket, Black (Pole & Base required)
	MAM-DS30-BGE	Plastic Wall Mounting Bracket, Beige (Pole & Base required)
	MAM-DS40-BLK	Plastic Wall Mounting Bracket, Black (Pole required)
	MAM-DS40-BGE	Plastic Wall Mounting Bracket, Beige (Pole required)
	MAM-DS28	Metal Wall Mounting Bracket (Pole & Base required)



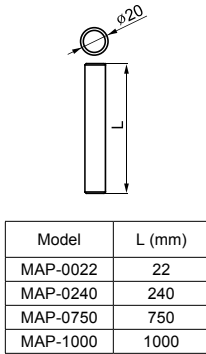
NPT Mounting with NPT Adaptor



Accessories

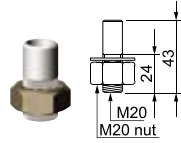
Mounting Poles

MAP-0022
MAP-0240
MAP-0750
MAP-1000

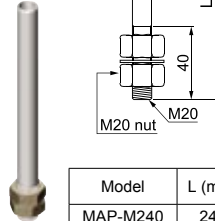


Threaded Poles

MAP-M043



MAP-M240
MAP-M750



Model	L (mm)
MAP-M240	240
MAP-M750	750

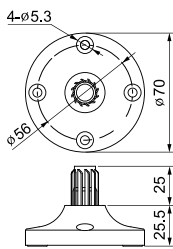
NPT Adaptor

MAP-NPT1/2

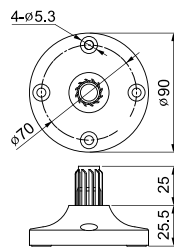


Mounting Bases

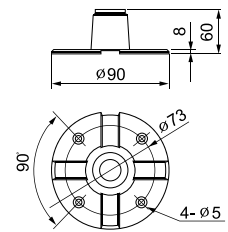
MAM-B070



MAM-B090

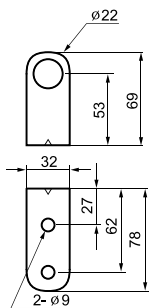


MAM-DS23-20

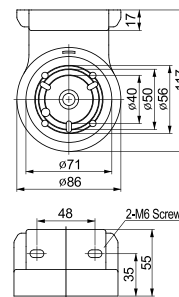


Wall Mount Brackets

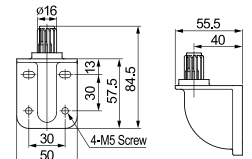
MAM-DS25



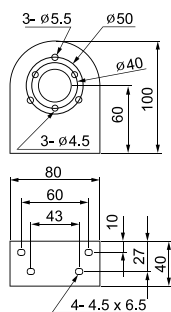
MAM-DS30



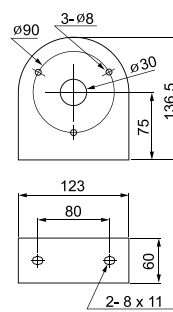
MAM-DS40



MAM-DS26



MAM-DS27



MAM-DS28

