

# MotionStudio

## MotionStudio (Motion controller program)

### ■ MotionStudio Overview

MotionStudio is for controlling a motion controller.  
A PC is Master and a motion controller is Slave.  
A PC(Master) and a motion controller(Slave) is connected each other by communication.

- ※Visit our website ([www.autonics.com](http://www.autonics.com)) to download the user manual and software.
- ※Applied model: PMC-2HSP



<MotionStudio screen>

### ■ Features

- **Supports various communication speed**  
: 9600, 19200, 38400, 57600, 115200bps
- **Uses all communication ports (COM1 to COM255) which is supported in operation system**
- **Convenient user interface**  
: You can set and check drive, parameter, and device status monitoring at the one screen.
- **COM test**  
: Checks communication status between PC and motion controller
- **Supports English and Korean**
- **Screen layout**  
: Program main menu, connection, node list, I/O status, node information, message window, drive type
- **Supports various instructions**
- **Displays drive and error status at message window**
- **Enables to control individually or simultaneously for the connected devices by communication**
- **Supports calculator for user convenience**  
: Calculates output PPS and circle interpolation, center coordination, manual deceleration point

## ■ Installing the program

### ◎ System requirements

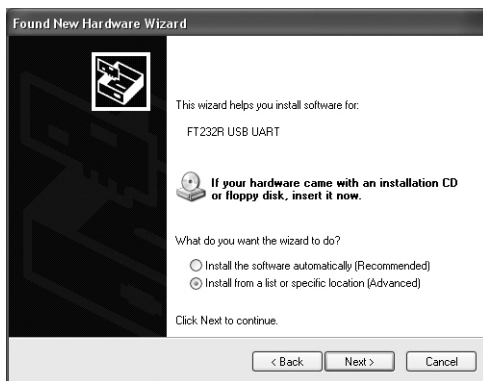
< Computer specification for using software >

Item	Minimum requirements
System	IBM PC compatible computer with Intel Pentium III or above
Operating system	Microsoft Windows 98/NT/XP/Vista/7
Memory	256MB or more
Hard disk	More than 1GB of free hard disk space
VGA	1024×768 or higher resolution display
Others	RS-232 serial port(9-pin), USB port

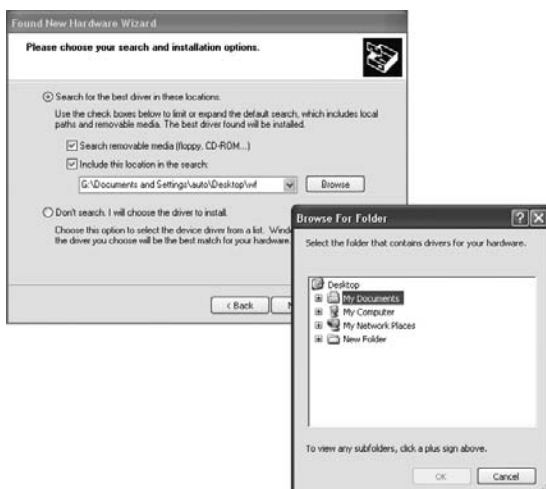
### ◎ USB driver installation

Install the USB driver at first to use an USB port.

- 1) Unzip the downloaded FT232R device driver at the desired folder.
- 2) Connect a PC and a motion controller by a USB communication cable and turn ON the power of a motion controller.
- 3) 'Found New Hardware Wizard' operates automatically and select 'Install from a list or specific location' and click 'Next'.



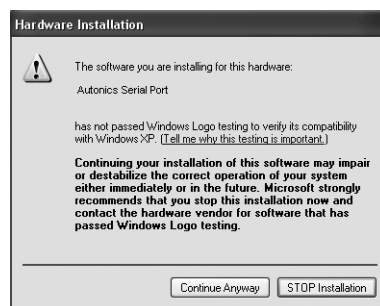
- 4) Select 'Include this location in the search' and click 'Browse'. 'Browse For Folder' dialog box opens. Designate the folder which has the driver and click 'OK'. When coming back to the Wizard, click 'Next'.



- 5) Processes installing the FT232R driver. Click 'Continue Anyway' and it completes to install the driver.



- 6) After the installing the driver, install the Port. Installation for Serial Port is same as 3), 4) steps. It processes installing the port. Click 'Continue Anyway' and it completes to install the port.



- 7) Click 'Finish' and complete installing.

(A)	Photo electric sensor
(B)	Fiber optic sensor
(C)	Door/Area sensor
(D)	Proximity sensor
(E)	Pressure sensor
(F)	Rotary encoder
(G)	Connector/Socket
(H)	Temp. controller
(I)	SSR/ Power controller
(J)	Counter
(K)	Timer
(L)	Panel meter
(M)	Tacho/ Speed/ Pulse meter
(N)	Display unit
(O)	Sensor controller
(P)	Switching mode power supply
(Q)	Stepper motor& Driver&Controller
(R)	Graphic/ Logic panel
(S)	Field network device
(T)	Software
(U)	Other